

Barham Church of England Primary School



Attendance Policy

Reviewed	November 2022
Date of next review	November 2025

Our Vision Statement

Barham is a vibrant, inclusive and high-achieving primary school with a family feel at the heart of the local and church community. We are committed to supporting each child to be confident, kind and curious. Our curriculum is broad, engaging and supports everyone to flourish as God intends.

Parents have a legal duty to ensure that their children attend school regularly and arrive on time. Regular attendance is essential to the all-round development of the child and they should be allowed to take full advantage of educational opportunities available to them in order to make good progress in their learning.

Poor attendance undermines their educational attainment and progress and, sometimes, puts pupils at risk by encouraging anti-social behaviour. It is the parents' responsibility to contact the school on the first day their child is absent. This is a safeguarding issue requirement so that all parties know that your child is safe and their whereabouts is known. Parents should regularly update the school and inform the school when their child is returning.

Pupils are expected to arrive by 9:00 am. All pupils that arrive late must report, with their parent to the school office where the reason for lateness is recorded.

1. Aims

Our school aims to meet its obligations with regards to school attendance by:

- Promoting good attendance and reducing absence, including persistent absence
- Ensuring every pupil has access to full-time education to which they are entitled
- Acting early to address patterns of absence

We will also support parents to perform their legal duty to ensure their children of compulsory school age attend regularly, and will promote and support punctuality in attending lessons.

2. Legislation and guidance

This policy meets the requirements of the [school attendance guidance](#) from the Department for Education (DfE), and refers to the DfE's statutory guidance on [school attendance parental responsibility measures](#). These documents are drawn from the following legislation setting out the legal powers and duties that govern school attendance:

- [The Education Act 1996](#)
- [The Education Act 2002](#)
- [The Education and Inspections Act 2006](#)
- [The Education \(Pupil Registration\) \(England\) Regulations 2006](#)
- [The Education \(Pupil Registration\) \(England\) \(Amendment\) Regulations 2010](#)
- [The Education \(Pupil Registration\) \(England\) \(Amendment\) Regulations 2011](#)
- [The Education \(Pupil Registration\) \(England\) \(Amendment\) Regulations 2013](#)
- [The Education \(Pupil Registration\) \(England\) \(Amendment\) Regulations 2016](#)
- [The Education \(Penalty Notices\) \(England\) \(Amendment\) Regulations 2013](#)

This policy also refers to the DfE's guidance on the [school census](#), which explains the persistent absence threshold.

This policy complies with our funding agreement and articles of association.

3. School procedures

3.1 Attendance register

By law, all schools (except those where all pupils are boarders) are required to keep an attendance register, and all pupils must be placed on this register.

The attendance register will be taken at the start of the first session of each school day and once during the second session. It will mark whether every pupil is:

- Present
- Attending an approved off-site educational activity
- Absent
- Unable to attend due to exceptional circumstances

Any amendment to the attendance register will include:

- The original entry
- The amended entry
- The reason for the amendment
- The date on which the amendment was made
- The name and position of the person who made the amendment

See appendix 1 for the DfE attendance codes.

Every entry in the attendance register will be preserved for 3 years after the date on which the entry was made.

Pupils must arrive in school by 9:00 on each school day.

The register for the first session will be taken at 9:00 and will be kept open until 9:15. The register for the second session will be taken at 1:00 for KS1 and 1:15 for KS2.

3.2 Unplanned absence

Parents must notify the school on the first day of an unplanned absence – for example, if their child is unable to attend due to ill health – by 9:00 or as soon as practically possible (see also section 6). This can be done either by phoning the school office 01227 831312 or by emailing: office@barham.kent.sch.uk.

Absence due to illness will be authorised unless the school has a genuine concern about the authenticity of the illness.

If the authenticity of the illness is in doubt, the school may ask parents to provide medical evidence, such as a doctor's note, prescription, appointment card or other appropriate form of evidence. We will not ask for medical evidence unnecessarily.

If the school is not satisfied about the authenticity of the illness, the absence will be recorded as unauthorised and parents will be notified of this in advance.

3.3 Medical or dental appointments

Missing registration for a medical or dental appointment is counted as an authorised absence; advance notice is required for authorising these absences.

However, we encourage parents to make medical and dental appointments out of school hours where possible. Where this is not possible, the pupil should be out of school for the minimum amount of time necessary.

Inform the school office (details above) of any medical/dental appointments

Applications for other types of absence in term time must also be made in advance. Information relating to whether the school can authorise such absences can be found in section 4.

3.4 Lateness and punctuality

A pupil who arrives late but before the register has closed will be marked as late, using the appropriate code.

A pupil who arrives after the register has closed will be marked as absent, using the appropriate code.

If a pupil is persistently late, the headteacher will either inform the parents by letter or arrange a meeting with parents.

3.5 Following up absence

The school will follow up any absences to ascertain the reason, ensure proper safeguarding action is taken where necessary, identify whether the absence is approved or not and identify the correct attendance code to use.

3.6 Reporting to parents

Parents will receive attendance figures for their child at the end of the school year with the annual report.

4. Authorised and unauthorised absence

4.1 Granting approval for term-time absence

Headteachers may not grant any leave of absence to pupils during term time unless they consider there to be 'exceptional circumstances'.

We define 'exceptional circumstances' as:

- Family Bereavement
- Attendance at an interview or exam (e.g. music, entrance exam)
- Participation in a regional or national sporting event
- Rostered parental leave (ie where leave is allocated by the employer and there is no scope to take leave in the school holidays for a whole year). Such requests must be supported by a covering letter from your employer

The school considers each application for term-time absence individually, taking into account the specific facts, circumstances and relevant context behind the request. A leave of absence is granted entirely at the headteacher's discretion.

Valid reasons for **authorised absence** include:

- Illness and medical/dental appointments – as explained in sections 3.2 and 3.3
- Religious observance – where the day is exclusively set apart for religious observance by the religious body to which the pupil's parents belong. If necessary, the school will seek advice from the parents' religious body to confirm whether the day is set apart
- Traveller pupils travelling for occupational purposes – this covers Roma, English and Welsh Gypsies, Irish and Scottish Travellers, Showmen (fairground people) and Circus people, Bargees (occupational boat dwellers) and New Travellers. Absence may be authorised only when a Traveller family is known to be travelling for occupational purposes and has agreed this with the school but it is not known whether the pupil is attending educational provision
- Unauthorised absence includes:
- Family days out

- Holidays during term time that do not qualify as an exceptional circumstance

Where attendance is a concern, the headteacher or member of SLT (Senior Leadership Team) will arrange a meeting with parents to discuss how it can be improved.

4.2 Legal sanctions

Schools can fine parents for the unauthorised absence of their child from school, where the child is of compulsory school age.

If issued with a penalty notice, parents must pay £60 within 21 days or £120 within 28 days. The payment must be made directly to the local authority.

The decision on whether or not to issue a penalty notice ultimately rests with the headteacher, following the local authority's code of conduct for issuing penalty notices. This may take into account:

- A number of unauthorised absences occurring within a rolling academic year
- One-off instances of irregular attendance, such as holidays taken in term time without permission
- Where an excluded pupil is found in a public place during school hours without a justifiable reason

If the payment has not been made after 28 days, the local authority can decide whether to prosecute the parent or withdraw the notice.

5. Children Missing in Education

No child should be removed from the school roll without consultation between the Headteacher and the Inclusion and Attendance Service when appropriate. Where a child is missing from education, Local Authority guidance will be followed, by completing a Child Missing Education referral for the following circumstances:-

- If the whereabouts of the child is unknown and the school has failed to locate him/her.
- The family has notified the school that they are leaving the area but no Common Transfer Form (pupil file) has been requested by another school.

6. Attendance monitoring

The attendance officer monitors pupil absence on a monthly basis.

Parents are expected to call the school in the morning if their child is going to be absent due to ill health (see section 3.2).

If a pupil's absence goes above 5 consecutive days or above 10%, we will contact the parents to discuss the reasons for this.

If after contacting parents a pupil's absence continue to rise, we will consider involving an education welfare officer.

The persistent absence threshold is 10%. If a pupil's individual overall absence rate is greater than or equal to 10%, the pupil will be classified as a persistent absentee.

Pupil-level absence data is collected each term and published at national and local authority level through the DfE's school absence national statistics releases. The underlying school-level absence data is published alongside the national statistics. We compare our attendance data to the national average, and share this with governors.

The school collects and stores attendance data on SIMs. It is used for internal purposes – to track the attendance of individual pupils, identify whether or not there are particular groups of children whose absences may be a cause for concern, and monitor and evaluate those children identified as being in need of intervention and support.

7. Roles and responsibilities

7.1 The governing board

The governing board is responsible for monitoring attendance figures for the whole school on at least a termly basis. It also holds the headteacher to account for the implementation of this policy.

The standards and achievement monitoring group are responsible for this role.

7.2 The headteacher

The headteacher is responsible for ensuring this policy is implemented consistently across the school, and for monitoring school-level absence data and reporting it to governors.

The headteacher also supports other staff in monitoring the attendance of individual pupils and issues fixed-penalty notices, where necessary.

7.3 The attendance officer

The attendance officer, Mrs Michelle Anderson:

- Monitors attendance data at the school and individual pupil level
- Reports concerns about attendance to the headteacher
- Works with education welfare officers to tackle persistent absence
- Arranges calls and meetings with parents to discuss attendance issues
- Advises the headteacher when to issue fixed-penalty notices

7.4 Class teachers

Class teachers are responsible for recording attendance on a daily basis, using the correct codes, and submitting this information to the school office.

7.5 Office staff

Office staff are expected to take calls from parents about absence and record it on the school system and undertake first day calling responsibilities for any unexplained absences where a parent has not contacted the school first.

7.6 Parent/Carer

Providing school with an appropriate reason for child/ren's absence on a daily basis. Should we not receive communication from you or be able to contact you, we will undertake a home visit.

8. Monitoring arrangements

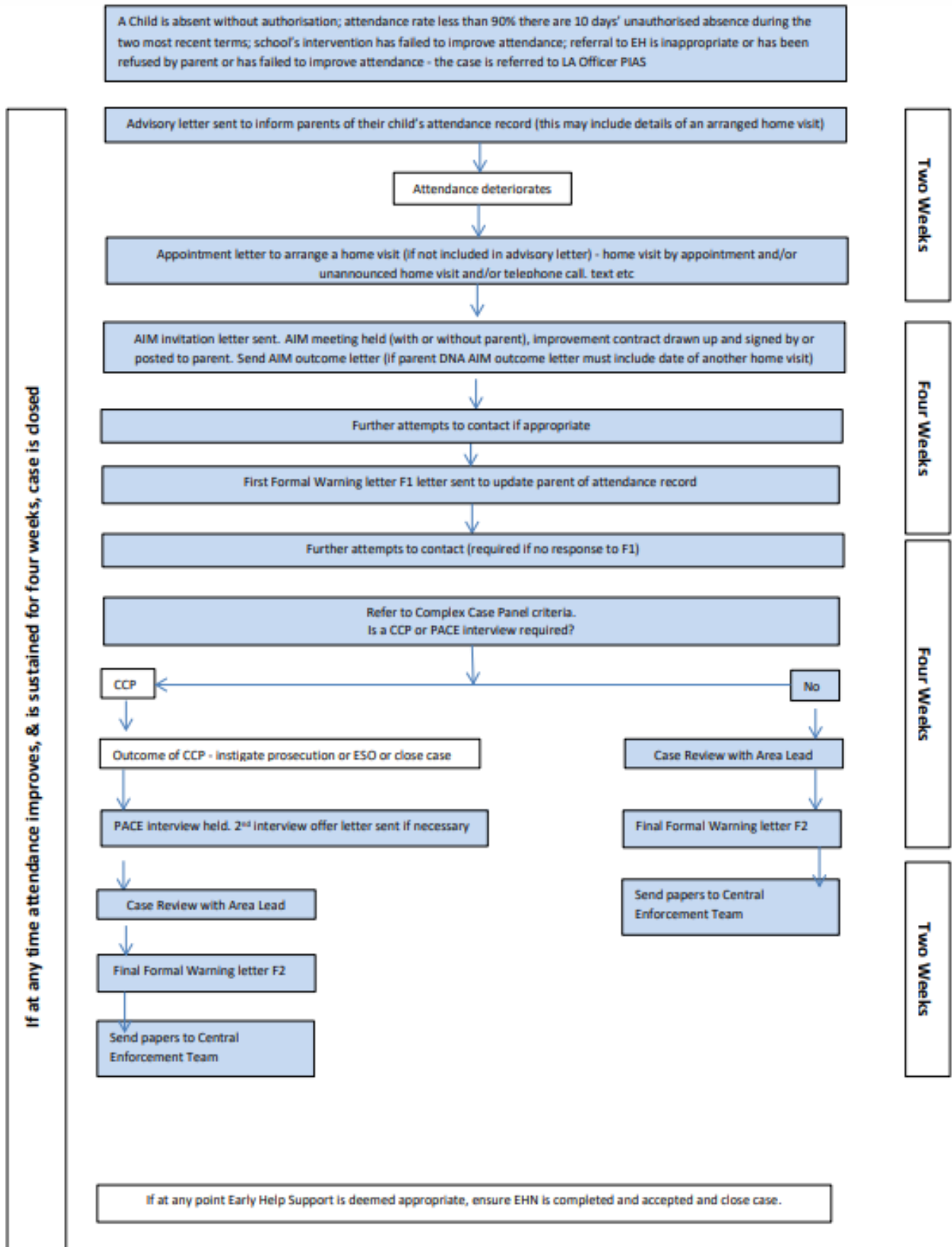
This policy will be reviewed every three years or earlier if deemed necessary by the headteacher. At every review, the policy will be shared with the governing board.

9. Links with other policies

This policy is linked to our child protection and safeguarding policy

Appendix 1 Pathway

Kent School Referral



Appendix 2: attendance codes

The following codes are taken from the DfE's guidance on school attendance.

Code	Definition	Scenario
/	Present (am)	Pupil is present at morning registration
\	Present (pm)	Pupil is present at afternoon registration
L	Late arrival	Pupil arrives late before register has closed
B	Off-site educational activity	Pupil is at a supervised off-site educational activity approved by the school
D	Dual registered	Pupil is attending a session at another setting where they are also registered
J	Interview	Pupil has an interview with a prospective employer/educational establishment
P	Sporting activity	Pupil is participating in a supervised sporting activity approved by the school
V	Educational trip or visit	Pupil is on an educational visit/trip organised, or approved, by the school
W	Work experience	Pupil is on a work experience placement

Code	Definition	Scenario
Authorised absence		
C	Authorised leave of absence	Pupil has been granted a leave of absence due to exceptional circumstances
E	Excluded	Pupil has been excluded but no alternative provision has been made
H	Authorised holiday	Pupil has been allowed to go on holiday due to exceptional circumstances

I	Illness	School has been notified that a pupil will be absent due to illness
M	Medical/dental appointment	Pupil is at a medical or dental appointment
R	Religious observance	Pupil is taking part in a day of religious observance
S	Study leave	Year 11 pupil is on study leave during their public examinations
T	Gypsy, Roma and Traveller absence	Pupil from a Traveller community is travelling, as agreed with the school
Unauthorised absence		
G	Unauthorised holiday	Pupil is on a holiday that was not approved by the school
N	Reason not provided	Pupil is absent for an unknown reason (this code should be amended when the reason emerges, or replaced with code O if no reason for absence has been provided after a reasonable amount of time)
O	Unauthorised absence	School is not satisfied with reason for pupil's absence
U	Arrival after registration	Pupil arrived at school after the register closed

Code	Definition	Scenario
X	Not required to be in school	Pupil of non-compulsory school age is not required to attend
Y	Unable to attend due to exceptional circumstances	School site is closed, there is disruption to travel as a result of a local/national emergency, or pupil is in custody
Z	Pupil not on admission register	Register set up but pupil has not yet joined the school
#	Planned school closure	Whole or partial school closure due to half-

		term/bank holiday/INSET day
--	--	-----------------------------